

CUSTOM MAGNETIC FORMING SYSTEMS

The Hamilton Form engineering department can work with you to design a custom magnetic side rail system. These systems are accurately made to your specifications. Custom side rail systems assure that your specific requirements are met.

MAGNETIC FORMING SYSTEMS

- Custom designed and built
- Can be made to accept risers
- Can be designed for self-stressing casting tables with side rail, window block-outs and weld plates, all anchored with magnets
- Improves productivity and flexibility by giving you the ability to relocate forms in minutes
- Protects forms by eliminating welding, bolt holes and plugs



24" side form with 12" riser anchored with magnets.



Side rails custom made with risers that stack on top.

Magnets are made in the U.S.A. by Thomas and Skinner, Inc.

Experts and world leaders in innovation, design and manufacture of magnets since 1901

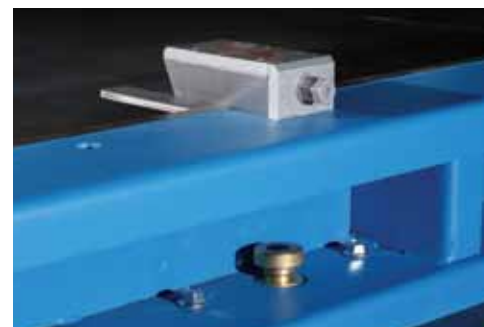


Hamilton Form Company, Ltd

7009 Midway Road • Fort Worth, Texas 76118
Ph 817.590.2111 • Fx 817.595.1110
www.hamiltonform.com



Header held in place with On/Off magnets.



Side rail anchored to casting table with button magnets. On/Off magnet used to hold welding plate in place.



MAGNETIC STEEL FORM AND SIDE RAIL SYSTEMS

INCREASE FLEXIBILITY AND PROTECT FORMS WITH MAGNETIC HOLD DOWN SYSTEMS FROM HAMILTON FORM



The Saf-T-Mag can easily be turned ON or OFF. Simply use a wrench to move the magnet to the ON or OFF position. When off, the magnet has no magnetic attraction and won't collect metal debris.



The 500 lb. capacity magnet can be used on 2" rails. The 2,000 lb. capacity magnet can be used in larger rails.

SAF-T-MAG ON/OFF MAGNET SAFER, FASTER, EASIER TO USE

Improve Convenience and Safety

Saf-T-Mag magnetic holding assemblies are safer and easier to use than conventional magnets because the magnets can be turned OFF. The magnet will not turn on unless it is placed on a steel surface. Once the magnet is in place, simply use a wrench to move the magnet to the ON position. Once engaged, the magnet holds the siderail firmly in place. Because the magnet can be turned OFF, workers no longer face the risk of pinched fingers and injuries associated with loaf and button magnets.

Convenient, Easy Operation

Simply turn the knob 90 degrees to turn it OFF and another 90 degrees to turn it ON. No special tools are required to turn the magnet on or off.

Once the switch is OFF the magnet assembly has no magnetic attraction and can easily be removed from the casting surface. Metal shavings and debris are not attracted to the magnet making cleaning a snap. With no magnetic attraction, stacking and storing magnets is no longer a problem.

THE REVOLUTIONARY SAF-T-MAG

- Allows for quick form release and relocation
- OFF switch prevents accidental activation and the "klack" of magnets slamming into the form
- Eliminates the need for pry bars, hammers and disengagement tools
- Metal debris won't stick to magnets turned off
- Protects forms by eliminating bolt holes and welding
- When off, magnets won't stick together for easier storage

For more information about magnetic steel form and side rail systems, contact Hamilton Form Company at 817 590-2111 or e-mail us at sales@hamiltonform.com.

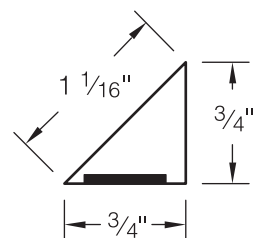


MAGNETIC STEEL CHAMFER AND REVEAL STRIPS

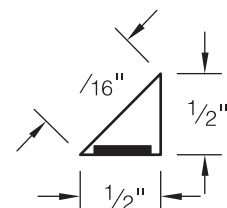
Hamilton Form steel chamfer and reveal strips are designed with magnets embedded in holes within a steel chamfer. There are no open grooves to fill with concrete. The magnets are protected from corrosion and stay firmly in place so that they won't pull out or rust under normal use. Available in 1/2" and 3/4" for chamfered edges or to be used as a false joint or reveal strip. Chamfer and reveal strips are available in 10-foot lengths. These products will provide years of dependable service.

MAGNETIC STEEL CHAMFER AND REVEAL STRIPS

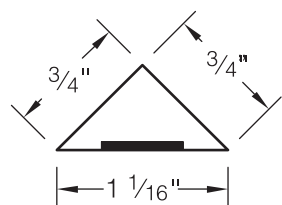
- Magnets encased in steel, designed to eliminate rust
- Won't pull out under normal use
- No open grooves to fill with concrete



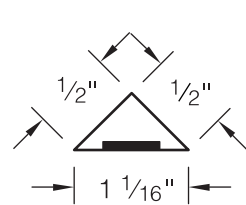
3/4" chamfer strip



1/2" chamfer strip



3/4" reveal strip



1/2" reveal strip

MAGNET SPECIFICATIONS

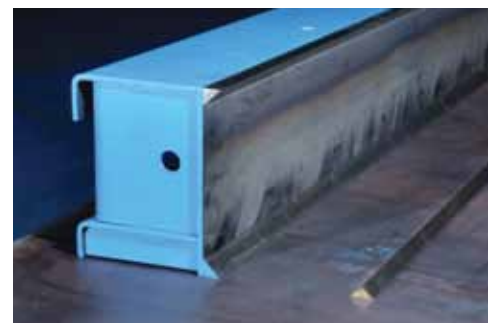
Model	Adhesive Force	Length	Width	Height	Approx. Shear Force
4" On/Off	500 lbs.	3-3/16"	3"	1-1/2"	170 lbs.
6" On/Off	1,500 lbs.	6"	3"	2"	500 lbs.
Button 2200	2,200 lbs.	12-15/16"	3"	1-1/16"	725 lbs.
Button 4000	4,000 lbs.	12-1/2"	5"	1-11/16"	1,320 lbs.
5" Loaf	1,100 lbs.	4-3/4"	2-3/32"	1-7/16"	365 lbs.
11" Loaf	2,200 lbs.	10-11/16"	2-3/32"	1-7/16"	1,320 lbs.



Magnets are embedded in holes within a steel chamfer with no open grooves to fill with concrete.



Magnetic corner chamfer is available in 1/2" and 3/4" in 10-foot lengths.



Magnetic corner chamfer and magnetic reveal strip.

BUTTON MAGNETS

The button magnet is fast and easy to engage by pushing down on the button. It can be disengaged with a specially designed disengagement tool. The small button magnet has an adhesive force of 2,200 lbs. and the larger button has an adhesive force of 4,000 lbs.



Button magnets can be incorporated into rails or used as stand alone holding devices.

LOAF MAGNETS

Loaf or bar magnets can be used for anchoring weld plates, block-outs and rails. The Hamilton Form Outrigger Rail System, will allow you to retrofit almost any existing bolt-down side rail to be held in place with a loaf magnet.

The 11" long magnet has an adhesive force of 2,200 lbs. and the 5" magnet has a force of 1,100 lbs. Both magnets are equipped with a 5/8" diameter NC threaded center hole. Loaf magnets can be easily disengaged by prying up on the projecting pin or with a common claw hammer or pry tool.



Button magnets are available in 2,200 lb. and 4,000 lb. adhesive force.



Loaf magnet fitted with an outrigger system.



5" and 11" loaf magnets.